



Customer Service (North America): 1-888-538-8683

Local (Wyoming, USA): 307-222-6086

Email: help@mybrewista.com



**READ THIS MANUAL PRIOR TO FIRST USE
AND SAVE FOR FUTURE REFERENCE**

1-year Limited Warranty

IMPORTANT SAFEGUARDS

When using electrical appliances, basic safety precautions should always be followed including the following:

- READ ALL INSTRUCTIONS.
- Blades are sharp. Handle carefully.
- To avoid injury, never place cutting blade on base without first putting the bowl properly in place.
- Keep hands, as well as spatulas and other utensils, away from moving blades while processing food to prevent the possibility of severe personal injury or damage to the food processor. A plastic scraper may be used but must be used only when the food processor is not running.
- To protect against risk of electrical shock, do not put base in water or other liquid.
- Close supervision is necessary when any appliance is used by or near children.
- Always unplug from outlet when not in use, before putting on or taking off parts, before removing food from bowl and before cleaning. To unplug, grasp plug and pull from electrical outlet. Never pull cord.
- Avoid contacting moving parts. Never insert food while machine is operating.
- Make sure motor has completely stopped before removing the lid. If the machine does not stop instantly when you turn the lid, do not use it.
- Do not operate any appliance with a damaged cord or plug, or after appliance has been dropped or damaged in any manner. Return appliance to the nearest authorized service facility for examination, repair or adjustment.
- The use of attachments is not recommended as this may cause fire, electric shock, or injury.
- Do not use outdoors.
- Do not let cord hang over edge of table or counter, or touch hot surfaces.
- Do not attempt to defeat the cover interlock mechanism.
- Be certain cover is securely locked in place before operating appliance.
- Cutting blade must be properly installed before adding any ingredients. Failure to do so may result in injury and or damage to the NutraMilk machine.

SAVE THESE INSTRUCTIONS

ADDITIONAL SAFEGUARDS

DO NOT OPERATE APPLIANCE IF THE LINE CORD SHOWS ANY DAMAGE OR IF APPLIANCE WORKS INTERMITTENTLY OR STOPS WORKING ENTIRELY.

EXTENSION CORDS

A short power-supply cord is to be provided to reduce the risk resulting from becoming entangled in or tripping over a longer cord. Longer detachable power-supply cords or extension cords are available and may be used if care is exercised in their use. If a longer detachable power-supply cord or extension cord is used,

- 1) The marked electrical rating of the cord set or extension cord should be at least as great as the electrical rating of the appliance, and
- 2) The extension cord should be a grounding-type 3-wire cord, and
- 3) The longer cord should be arranged so that it will not drape over the countertop or tabletop where it can be tripped over, snagged, or pulled on unintentionally (especially by children).

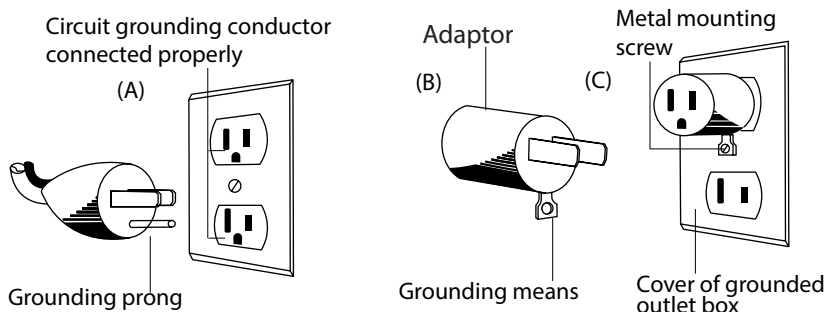
GROUNDING INSTRUCTIONS

This appliance must be grounded while in use.

CAUTION: To ensure continued protection against risk of electric shock, connect to properly grounded outlets only.

GROUNDING INSTRUCTIONS

In North American markets, the appliance has a plug that looks like Figure A. **DO NOT attempt to insert a power cord into an incompatible outlet.** Appliance damage, electrical system damage or physical harm may result. An adaptor, as shown in Figure B, should be used for connecting a 3-prong grounding plug to a 2-wire receptacle. The grounding tab, which extends from the adaptor, must be connected to a permanent ground such as a properly grounded receptacle as shown in Figure C, using a metal screw.

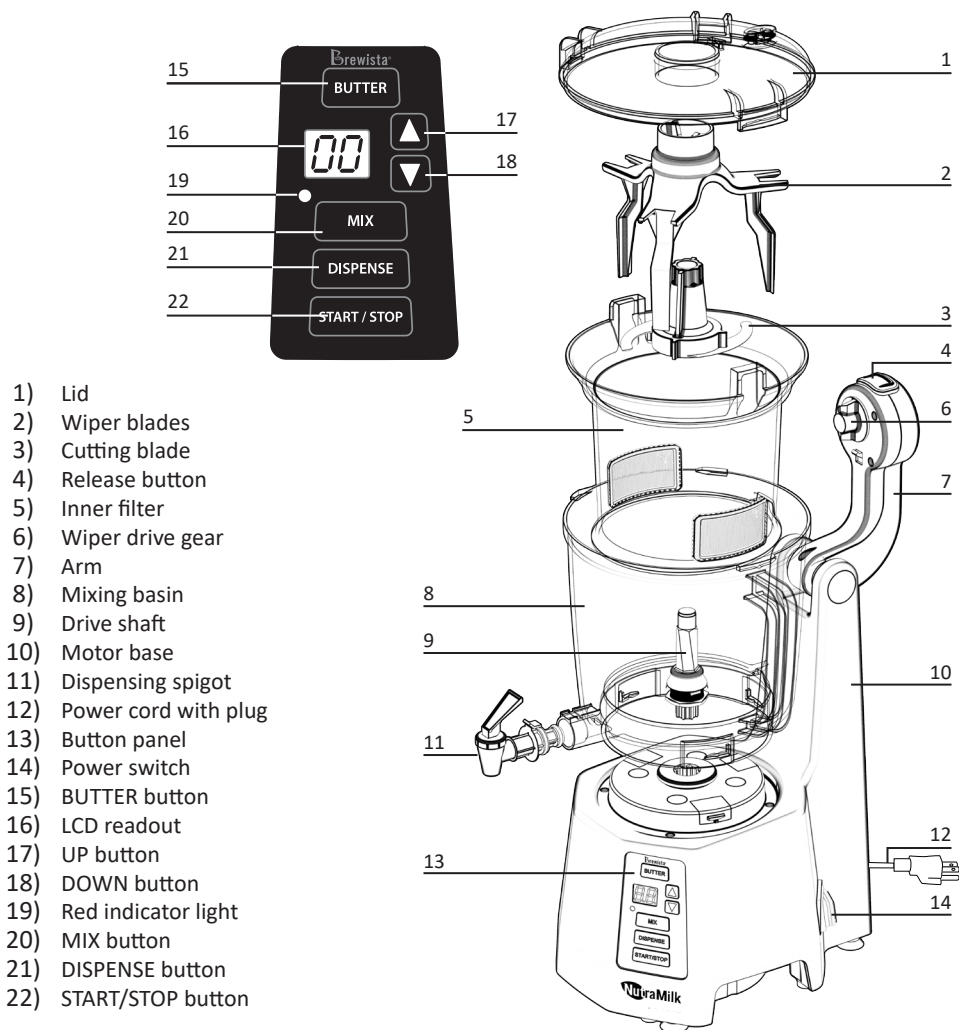


Warning: It is best to use this appliance on a dedicated circuit or with all other appliances off during this appliance's use. It will not damage electrical systems but caution should be used to not overload this circuit with other appliances running at the same time.

Table of Contents

Cover/Customer Service Information	1
IMPORTANT SAFEGUARDS	2
ADDITIONAL SAFEGUARDS	3
Nut Processor Components & Technical Data	5
Operation Instructions	6
• Assembling the NutraMilk	6
• Making Alternative Butter	6
• Making Alternative Milk	7
◦ Mixing Cycle	7
◦ Dispensing Process	8
• Sleep Mode	8
• Cleaning and Maintenance	9
• Storage	9
• Recommended Ratios & Processing Times	10
• Warnings	10
1-year Limited Warranty Information	11
Correct Disposal of this Product	11

Nut Processor Components



Technical Data

USA and Canada models:

Rated voltage: 120 V ~60 Hz

Rated power input: 320W

Capacity: Max. 67.6 oz (2L)

Operation Instructions

Note: Before using the NutraMilk for the first time, be sure to wash all components as recommended in the Cleaning Section of these instructions (see page 9).

1 Assembling the NutraMilk (Refer to Components List on Page 5):

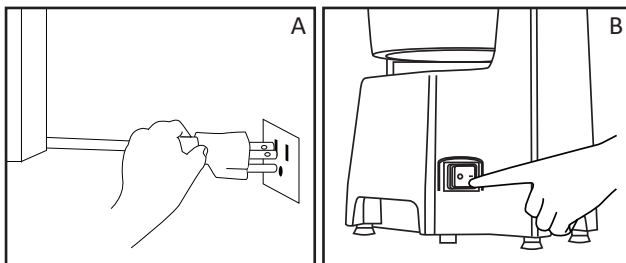
- Set the base (10) on a flat, steady surface with arm (7) tilted up away from the base.
- Place the mixing basin (8) on the center of the base with spigot hole at the front.
- Twist to lock in place.
- Insert neck of the dispensing spigot (11) into hole at front of the mixing basin (8) until it clicks into place.
- Rotate the lid (1) counter-clockwise to unlock and remove.
- Insert the inner filter (5) within the mixing basin (8) and center it into position.
- Carefully align cutting blade (3) with center post of base and press firmly to install.

WARNING: LACERATION HAZARD - Handle blade carefully; it is very sharp. Make sure unit is unplugged before installing or removing blade.

- Place wiper blades (2) into inner filter (5).
- Replace lid (1) and twist clockwise to lock into place.
- Lower arm (7) to lock into top of lid (1). If the wiper drive gear (6) does not line up when lowering the arm (7), rotate the wiper blades (2) a quarter turn by hand and lower arm again.
- Plug the power cord (12) into a grounded wall outlet (Illus. A) and press the power switch (14) at the back of the appliance (Illus. B). The LCD readout (16) will display "00".

Notes:

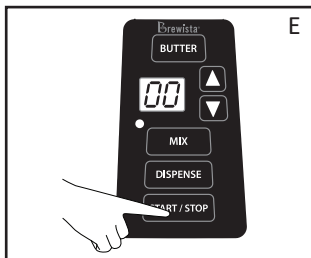
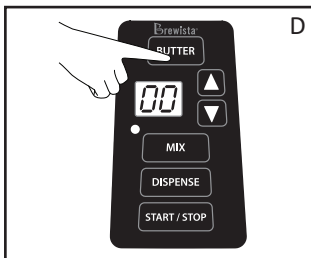
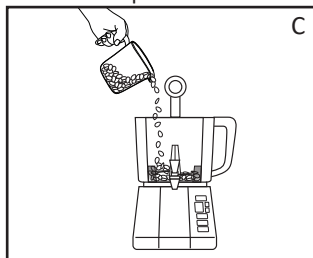
- Before plugging the NutraMilk machine into a wall outlet, check that the electrical circuit is not overloaded with other appliances.
- If the LCD displays "Er" when any function button is pressed, the components have not been assembled correctly. Unplug the unit and re-assemble its components.



2 Making Alternative Butter:

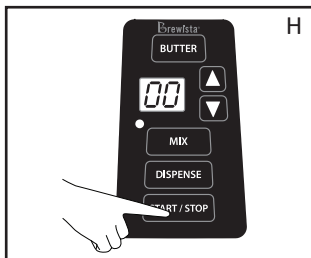
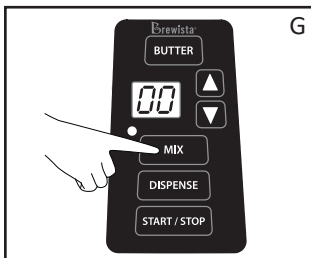
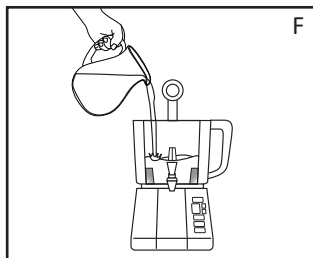
- Ensure that the cutting blade is properly positioned.
- Fill the inner filter (5) with your preferred nut or seed (Illus. C).
 - If you intend to make alternative milk from this butter, the minimum amount of ingredients is 1 cup.
 - If you intend to make alternative butter, a minimum 2 cups of ingredients are required. Refer to our Recommended Ratios & Processing Times chart on page 10 for guidance.
- Press the BUTTER button (Illus. D) and then the START/STOP button (22) (Illus. E) to begin the process of making butter.

- The default BUTTER time is 16 minutes. To increase the desired time, press the UP button (17). To decrease the desired BUTTER time, press the DOWN button (18).
 - The UP and DOWN buttons (17 & 18) increase or decrease time by one minute.
 - Maximum possible BUTTER time is 25 minutes.
- Timer will count down as the butter process runs.
- When the butter process is complete, the LCD readout (16) will display “00”.
- To stop the butter process at any time, press the START/STOP button (22) and the LCD readout (16) will display “00”. Pressing any function button will also stop the butter process.

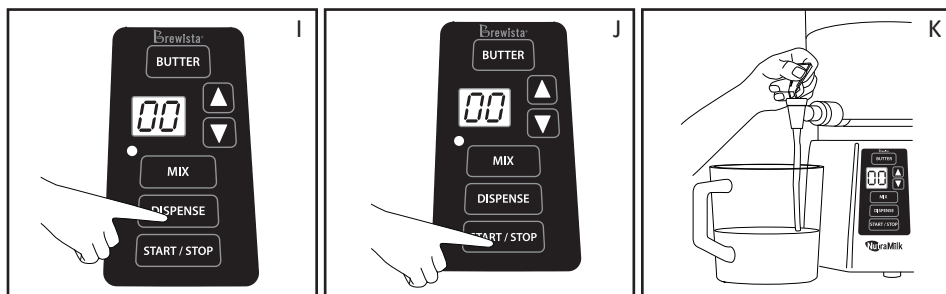


3 Making Alternative Milk:

- Mixing Cycle
 - First run a butter process as described in step 2 with at least 1 cup of the ingredients of your choosing.
 - Once the butter process is complete and the machine is fully stopped, press the release button (4), raise the arm (7), and open the lid (1) by turning it counter-clockwise. Add 2 quarts (about 2 liters) of water to the nut butter in the inner filter (5) (Illus. F).
 - **Note: Use cool water when making alternative milk. Do not use hot water in your NutraMilk or you may damage your machine!**
 - Close the lid (1) and turn it clockwise to lock, lower arm (7), and press to lock into top of lid (1).
 - Press the MIX button (20) (Illus. G) and then the START/STOP button (22) (Illus. H) to mix the water with the butter.
 - The default mixing time is 1 minute. Press the UP and DOWN buttons (17 & 18) to change to the desired mixing time.
 - The UP and DOWN buttons (17 & 18) increase or decrease time by one minute.
 - Maximum possible MIX time is 25 minutes.
 - To stop the mixing process, press the START/STOP button (22) again at any time. The unit will display “00” on the LCD readout (16). Pressing any function button will also stop the mixing process.



- As the machine's cutting blade (3) turns, the combined water and butter are pressed through fine 100 grade mesh filters on either side of the inner filter (5), sifting out fine particles and emulsifying the nut butter in the water.
- The filtered milk fills the outer portion of the mixing basin (8) until the process is complete.
- **Dispensing Process**
 - Place a glass or plastic storage container beneath the dispensing spigot (11) of the machine.
 - Once the mixing process is complete, press the DISPENSE button (21) (Illus. I) and then the START/STOP button (22) (Illus. J).
 - Press the DISPENSE button (21) at any time to stop this process. The LCD readout (16) will display "00" when the process has been cancelled.
 - Lift dispensing spigot's (11) lever while the machine is running and add your freshly made milk to the storage container (Illus. K).
 - Refrigerate alternative milk after dispensing. Alternative milk will remain fresh for 5-6 days when stored in an airtight container inside a refrigerator.



Note: For best performance, please allow your machine to cool down for 7 minutes before starting the next cycle.

4 Sleep Mode:

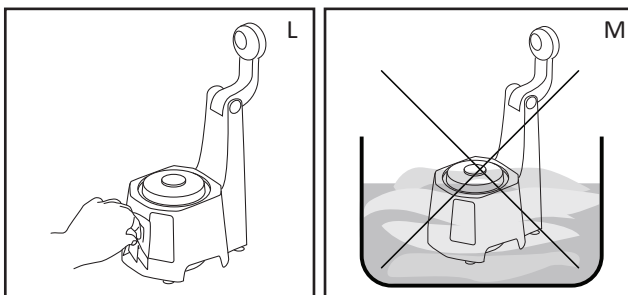
- Your NutraMilk will enter "Sleep mode" automatically after 20 seconds of inactivity. The brightness of the LCD readout (16) will dim in order to save power.
- Touching any button will turn the machine back on and the LCD readout's (16) brightness will return to normal.
- For best results, Brewista recommends powering off and unplugging your NutraMilk after each use.

5 Cleaning and Maintenance:

- This appliance contains no user-serviceable parts and requires little maintenance.
 - Refer any servicing or repairs to qualified personnel.
- Clean your NutraMilk regularly.
 - Clean the outside of the base (8) and the attached arm (7) with a damp, soft cloth (Illus. L). Use the included brush to clean the mesh portions of the inner filter (5).
- Disassemble and clean the basins, blades, and wiper blades with dish detergent and rinse thoroughly with water OR wash in a dishwasher (top rack recommended).
 - Do not use abrasive cleaners.
 - All parts except the base (8) are dishwasher safe - top rack recommended.
 - After cleaning, dry all components thoroughly prior to storage.

WARNING: Never immerse the base in water or other liquids (Illus. M).

WARNING: Always unplug the appliance prior to cleaning.



6 Storage:

- Clean and dry all parts before storing.
- Store the NutraMilk in its box or in a clean, dry place out of reach of children.
- Never wrap the power cord around the appliance.

7 Troubleshooting:

- If the LCD displays "Er" when any function button is pressed, the components have not been assembled correctly. Unplug the unit and re-assemble its components.
- If the wiper drive gear (6) does not line up when lowering the arm (7) into place, rotate the wiper blades (2) a quarter turn by hand and lower arm again.
- LCD displays "OL" - The NutraMilk is equipped with overload protection to protect it from electrical overload. When a power overload is detected, the LCD display will blink "OL" and all button lights will blink. Unplug the unit and ensure there is nothing blocking the blades.
- START/STOP button (22) is not working - If no function was chosen prior to pressing the START/STOP button (22), the LCD readout (16) will blink "00" for 3 seconds. Choose a function button (BUTTER, MIX, or DISPENSE) and press the START/STOP button (22) again.

Recommended Ratios & Processing Times

Refer to the below charts for the best results with your NutraMilk:

Ingredients	Minimum Amount	Maximum Amount
Dry Ingredients (for Butters)	2 cups	3 cups
Dry Ingredients (for Milks)	1 cup	3 cups
Water	3 cups (240 mL)	2 quarts (2 L)

Note: Brewista recommends using 1 cup of nuts or seeds per 1 quart of water when making alternative milks. For a more robust alternative milk, use 1-1/2 cups per 1 quart of water.

A Note about Volumes: Please refer to the Recipe Book or www.thenutramilk.com for volume measurements in grams for various types of nuts and seeds.

Select your ingredients, choose your end product (i.e. butter or milk), then refer to the chart below for the processing time recommended during the BUTTER cycle.

Suggested BUTTER Cycle Processing Times	Making Alternative Butter (with 2 cups <u>Raw</u> Ingredients)	Making Alternative Milk (with 2 cups <u>Raw</u> Ingredients)
Nuts		
Almonds	12-13 min	To make milk, first make butter. Add up to 2 liters of water to container with butter and replace lid. Press the MIX button then the START/STOP button. Motor will run for one minute. Place separate container under spigot, press the DISPENSE button then the START/STOP button. Open spigot while motor is running to dispense milk. <i>*Oats and Rice do not butter. To make Oat or Rice Milk, process those ingredients for specified time on the BUTTER cycle, then follow MILK instructions above.</i>
Brazil Nuts	2 min	
Cashew Nuts	5-6 min	
Hazelnuts	15-16 min	
Macadamia Nuts	4-5 min	
Pecans	3-4 min	
Pistachio Nuts	5-6 min	
Walnuts	5-6 min	
Coconuts (Young Thai, no husk)	3-4 min	
Seeds		
Hemp	5-6 min	
Sunflower	14-15 min	
Pumpkin	10-11 min	
Sesame & Black Sesame	15-16 min	
Grains & Legumes		
Peanuts	2-3 min	
Adzuki Beans	1 min	
Oats	[1 min]*	
Rice	[2-3 minutes]*	

Important Note: Processing times may vary by a few minutes depending on the moisture content of your ingredients.

WARNING: Never leave the unit unattended while appliance is running, especially if there are children nearby.

WARNING: Do not open the lid while blades are turning.

WARNING: Do not immerse the base in water or any other liquid.

This may cause electric shock or damage the appliance.

WARNING: Be careful when handling sharp blades.

Danger of laceration!

LIMITED WARRANTY

1-Year Limited Warranty from the date of original purchase.

1. This warranty extends only to the original consumer, purchaser, or gift recipient. Keep the original sales receipt, as proof of purchase is required to make a warranty claim. The product must be purchased at an authorized retailer for the warranty to be valid.
2. Defects that occur due to improper connection, improper handling, poor water quality, or repair attempts by non-authorized persons are not covered by the warranty. The same applies for failure to comply with the use of consumables (e.g. cleaning and decalcifying agents) that do not correspond to the original specifications.
3. Routine wear parts (e.g. seals and valves, blades) and fragile parts, like glass, are excluded from the warranty.
4. Damages which are not under responsibility of the manufacturer are not covered by the warranty. This is valid, especially for claims arising from improper use (e.g. operation with wrong type of current or voltage).
5. The guarantee becomes void if repairs are carried out by third parties, who are not authorized by the manufacturer to do so and/or if spare parts are used other those from the original equipment manufacturer.
6. Failure to comply with any important safeguards listed in section 1 will void the limited warranty.

To make a warranty claim, do not return this appliance to the store. Please email help@mybrewista.com or call 1-888-538-8683. For faster service, locate the model, type, and serial numbers on your appliance and have available for the call or include in your email.



Correct Disposal of this Product

This symbol indicates that this product should not be disposed of with other household wastes throughout the European Union. To prevent possible harm to the environment or human health from uncontrolled waste disposal, recycle it responsibly to promote the sustainable reuse of material resources. To return your used device, please use the return and collection systems or contact the retailer where the product was purchased. They can collect this product for environmentally safe recycling.



NutraMilk
BRNMC2L Series

1133 W. 27th Street, Cheyenne, WY 82001, USA | www.thenutramilk.com

Toll Free in North America: 888-538-8683 | Local: 307-222-6086