

NITRO INFUSER

by Enhanced Beverage Solutions

Install Manual

Enhanced Beverage Solutions

12241 Wood Lake Drive

Burnsville, MN, 55337

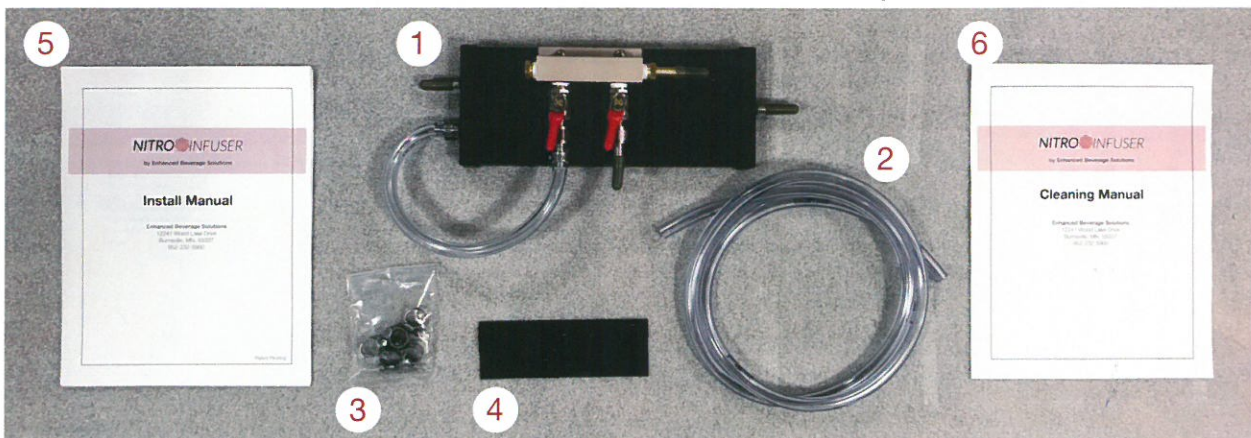
952-232-5900

**Patent Pending*

1. INCLUDED IN THE BOX

In your box, you should find all of the following:

1. Nitro Infuser (2-way gas manifold attached to Nitro Infuser)
2. Beverage hose
3. 6 stainless steel hose clamps
4. Velcro
5. Install Manual
6. Cleaning Manual



Reccommended tools for installation include:

- Hose cutter or X-knife
- Standard screwdriver

2. HOW TO INSTALL THE NITRO INFUSER

Step 1: Preparation

If you are installing your Nitro Infuser in an existing system, the nitrogen gas must be shut off and depressurized, including the coffee keg. Open the tap faucet to release pressure.

Step 2: Remove & account for all components

Reference Part 1 of manual, "Included in the Box," to ensure you have all components.

Step 3: Identify Mounting Location for Nitro Infuser

The Nitro Infuser will be mounted within the kegerator, on the tap line from the coffee keg to the tap faucet. Placement of your Nitro Infuser on the inside wall of the kegerator near the top is ideal. The Nitro Infuser has two shut-off valves that must be accessible.

For best performance, the Tap Out line to the faucet should be as short as possible.



**Patent Pending*

Step 4: Nitrogen Gas System

It is important to make sure your gas system is turned off until the install is complete

4 a. Remove gas line from regulator output and install to the right side of the Nitro Infuser two-way gas manifold.

4 b. Connect the provided beverage hose from regulator to the Nitro Infuser two-way gas manifold input.

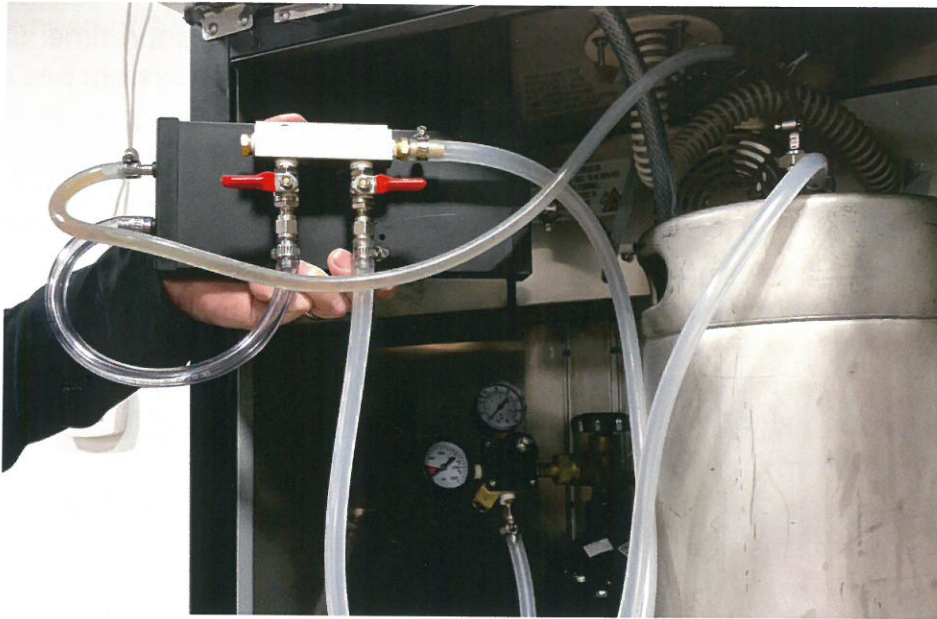


Step 5: Coffee System

5 a. Identify the line from the coffee keg to the tap/faucet. Cut the line at a point that will fit the nitro infuser mounting location.

5 b. Connect the tap line from the faucet to the Nitro Infuser line labeled "Tap." Tighten the hose connectors.

5 c. Connect the keg out line to the Nitro Infuser line labeled "Keg." Tighten the hose connectors.



Step 6: Mount Nitro Infuser to Keg System

- 6 a. Once all connections are complete, double-check connections to assure hose clamps have been tightened.
- 6 b. Attach Velcro to the back of your Nitro Infuser.
- 6 c. Attach Nitro Infuser to kegerator in desired location from Step 3.
- 6 d. Place gas cylinder & coffee keg into kegerator. Assure all hoses have a clear path and are not kinked. Assure kegerator system door is able to close properly.

Step 7: Pressurizing System

- a. Keep tap faucet in the closed position - DO NOT OPEN TAP FAUCET.

UNTIL AFTER STEP 7

- 7 b. Turn the nitrogen gas to a full open position
- 7 c. Adjust gas regulator to 32 psi - please note that if the regulator is set to higher than 32 psi you will need to release pressure from coffee keg once regulator is adjusted to 32 psi.

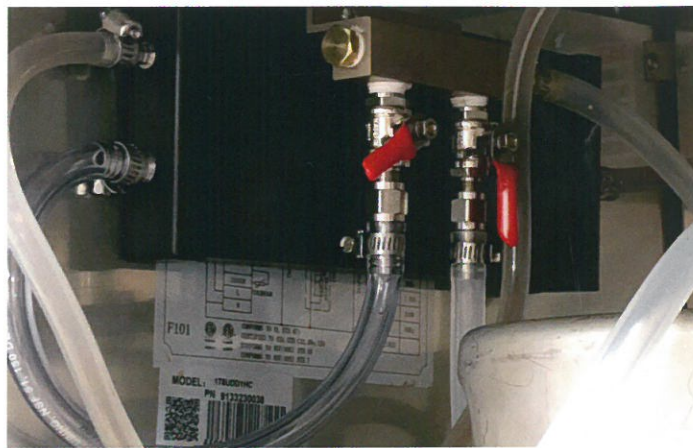
DO NOT OPEN TAP FAUCET AT THIS POINT

**Patent Pending*

7 d. You will hear nitrogen gas pressurizing the coffee keg for a short time. Check every connection for any gas or coffee leaks. It is important to ensure system has no leaks before proceeding.

Step 8: Adjusting Nitro Infuser and First Pour

8 a. Adjust the Nitro Infuser gas output lever (left) to an approximately 10-15% open position. The right lever should remain at a full open position.



8 b. It will take one or two glasses poured for the coffee to bleed and pressurize the new system. Do not be alarmed if the first glass pours with heavy foam.

8 c. Once you have poured 2 glasses, the system should be fully bled & pressurized.

8 d. Evaluate the pour by your shop's standards. If the pour is not perfect, adjust the Nitro Infuser gas output lever accordingly.

Step 9: Final System Inspection

Visually inspect all connections to ensure there are no gas or beverage leaks. Tighten any connections as needed.

Step 10. Maintain your Nitro Infuser and Keg System Regularly

See cleaning instruction manual. Reference section 1 "Included in Box."

3. SUPPORT/WARRANTY

If you are in need of service or support, contact the Nitro Infuser team:

Call: +1 (952) 232-5900

Email: support@enhancedbeveragesolutions.com

WARRANTY

Enhanced Beverage Solutions, LLC. ("ENHANCED BEVERAGE SOLUTIONS") warrants that for a period of one (1) years following delivery, the ENHANCED BEVERAGE SOLUTIONS products you have purchased will (a) perform in accordance with published specifications, and (b) will be free from defects in materials or workmanship. In the event an ENHANCED BEVERAGE SOLUTIONS PPRODUCT does not meet this warranty, subject to the conditions set forth in these terms and conditions, ENHANCED BEVERAGE SOLUTIONS' sole obligation will be, at its election, to repair or replace the ENHANCED BEVERAGE SOLUTIONS PPRODUCTS in question.

ENHANCED BEVERAGE SOLUTIONS MAKES NO OTHER WARRANTIES, EXPRESS OR IMPLIED, AND ALL IMPLIED WARRANTIES OF MERCHANTABILITY, NON-INFRINGEMENT AND FITNESS FOR A PARTICULAR PURPOSE ARE HEREBY DISCLAIMED. IN NO EVENT WILL ENHANCED BEVERAGE SOLUTIONS BE LIABLE FOR PUNITIVE, SPECIAL OR CONSEQUENTIAL DAMAGES, OR FOR AN AMOUNT IN EXCESS OF THE PURCHASE PRICE OF THE DEFECTIVE ENHANCED BEVERAGE SOLUTIONS PPRODUCT OR PRODUCTS.

**Patent Pending*

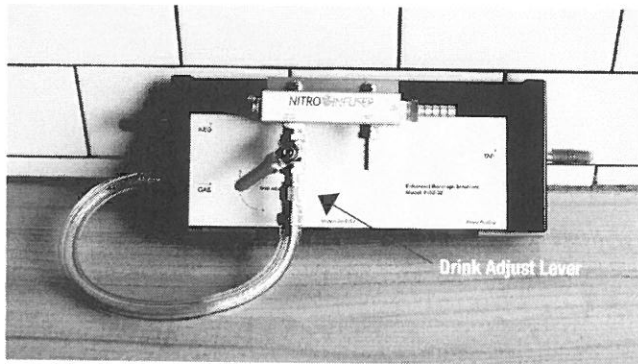
HOW TO: adjust your NITRO INFUSER

Why Adjust the Nitro Infuser?

There are a variety of factors that affect the end result of your nitro cold brew. Altitude, brand of regulator and the tubing within your keg can all have an impact on the infusion of your beverage. The nitro-infusion in your beverage is seen in the dense, thick head of microfoam, cascade and golden color.

By following the steps below, you will see how easy it is to adjust your Nitro Infuser to work with these factors to produce

Step One: The Starting Point

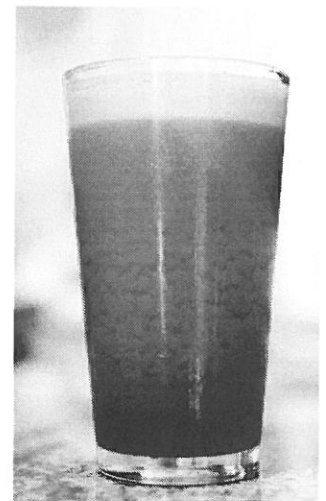


The best starting point for the Nitro Infuser adjustment lever is approximately 10-15% open. This will align with the drink adjust line on the Nitro Infuser label.

Step Two: Pour & Analyze

Pour a sample of nitro cold brew to analyze the amount of infusion. The image below depicts what we have defined as 'the perfect nitro cold brew.'

Does your nitro look like this? →



Step Three: Adjust

3. a) Too Much Infusion:

If your sample of nitro has too much infusion, you will want to adjust the lever to a more closed position. ***It is important that this is done in very small adjustments.***

Your nitro infuser should now be about 9-14% open.

3. b) Too Little Infusion:

If your sample has too little infusion, you will want to adjust the lever to a more open position. ***It is important that this is done in very small adjustments.***

Your nitro infuser should now be about 11-16% open.

Step Four: Repeat

The small adjustments made will have a large impact on the drink. After each slight adjustment, pour yourself a sample of cold brew to analyze the infusion level. After a few pours and minor adjustments, you will find the ideal setting for your kegerator. Once you have found this ideal setting, any adjustments made will be minimal and infrequent.

Step Five: Enjoy!

Now that your nitro cold brew is officially dialed in, sit back, relax and enjoy your beverage.

NOTICE

Enhanced Beverage Solutions has made the following adjustments:

1. We have made the decision to remove the gas shut-off valve to the keg to avoid any conflict or confusion in operation with the regulator.
2. For shipping purposes, we have also removed the hose from Gas to Infuser to Gas In. This hose will now be assembled by the user. To assemble, simply follow the steps below:
 2. a) Remove the Nitro Infuser, the short beverage hose and two hose clamps from box.
 2. b) Slide each end of hose into a hose clamp.
 2. c) Attach one end of the hose to "GAS TO INFUSER" and the other to "Gas"
 2. d) Tighten hose clamps.
3. For easier attachment to kegerator, we have also included a new mounting kit. The kit includes two brackets and four screws. Prior to installation, please verify that your kegerator does not have any refrigerant or electrical buried behind the wall. A vast majority of kegerators do not, so for most this is not a concern.

Once hose set-up is complete, your infuser will look like this:

